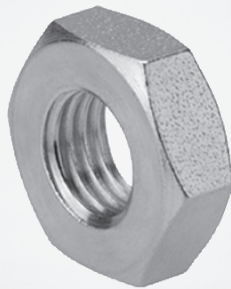


Cylinder accessories → piston rod mountings, series CM2

Nuts for piston rod mounting

Brochure



Cylinder accessories → piston rod mountings, series CM2

Nuts for piston rod mounting



Piston rod nut MR9

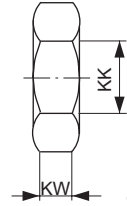
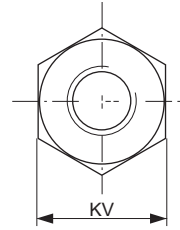
3

Cylinder accessories → piston rod mountings, series CM2

Piston rod nut MR9



00105168



00105192

Part No.	KK	KV	KW	Material	Surface	Weight [kg]			
1823300033	M6	10	3.2	Steel	galvanized	0.004			
1823300034	M8	13	4	Steel	galvanized	0.005			
8103040224	M10	17	8	Steel	galvanized	0.011			
1823300020	M10x1,25	17	6	Steel	galvanized	0.01			
8103060064	M12	19	10	Steel	galvanized	0.017			
1823300021	M12x1,25	19	7	Steel	galvanized	0.012			
8103040314	M16x1,5	24	13	Steel	galvanized	0.02			
8103040344	M20x1,5	30	16	Steel	galvanized	0.06			
3670312000	M24x2	36	12	Steel	galvanized	0.06			
1823300029	M27x2	41	13.5	Steel	galvanized	0.108			
1823300025	M36x2	55	18	Steel	galvanized	0.175			
1823300026	M42x2	65	21	Steel	galvanized	0.37			
3670332000	M48x2	65	25	Steel	galvanized	0.4			
3330310000	M4	7	2.2	Stainless steel	-	0.001			
8103190644	M6	10	3.2	Stainless steel	-	0.003			
8103190164	M8	13	4	Stainless steel	-	0.006			
8103190464	M10x1,25	16	5	Stainless steel	-	0.008			
3590304000	M12x1,25	18	6	Stainless steel	-	0.02			
3590305000	M16x1,5	24	8	Stainless steel	-	0.03			
3590308000	M20x1,5	30	10	Stainless steel	-	0.05			
2990600303	M10x1,25	17	5	Stainless steel, acid-proof	-	0.01			
2990600304	M12x1,25	19	6	Stainless steel, acid-proof	-	0.02			
2990600305	M16x1,5	24	8	Stainless steel, acid-proof	-	0.03			
2990600308	M20x1,5	30	10	Stainless steel, acid-proof	-	0.05			
2990600312	M27x2	42	12	Stainless steel, acid-proof	-	0.07			
2990600316	M36x2	50	16	Stainless steel, acid-proof	-	0.15			
2990600325	M42x2	60	21	Stainless steel, acid-proof	-	0.3			
2990600332	M48x2	65	25	Stainless steel, acid-proof	-	0.4			

Bosch Rexroth AG
Pneumatics
Ulmer Straße 4
D - 30880 Laatzen
Phone +49 511 2136-0
Fax +49 511 2136-2 69
sales-pneumatics@boschrexroth.de
www.boschrexroth.com/pneumatics

Your contact:

Canada

Bosch Rexroth Canada Corp.
3426 Mainway Drive
Burlington, Ontario L7M 1A8
Tel. +1 905 335-5511
Fax +1 905 335-4184

Australia

Bosch Rexroth Pty. Ltd.
3 Valediction Road
Kings Park NSW 2148
Sydney
Tel. +61 2 9831-7788
Fax +61 2 9831-5553

U.S.A.

Bosch Rexroth Corp.
1953 Mercer Road
Lexington, KY 40511-1021
Kentucky
Tel. +1 859 254-8031
Fax +1 859 254-4188

Great Britain

Bosch Rexroth Ltd.
Broadway Lane
South Cerney
Cirencester, GL7 5UH
Gloucestershire
Tel. +44 1285 86-3000
Fax +44 1285 86-3003

further contacts:
www.boschrexroth.com/addresses

The data specified above only serve to describe the product. No statements concerning a certain condition or suitability for a certain application can be derived from our information. The information given does not release the user from the obligation of own judgment and verification. It must be remembered that our products are subject to a natural process of wear and aging.

© This document, as well as the data, specifications and other informations set forth in it, are the exclusive property of Bosch Rexroth AG. Without their consent it may not be reproduced or given to third parties.

Subject to modifications.

Online-PDF
04-11-2010